

Bus Interchange





BUSCONNECTS DUBLIN CORE BUS CORRIDORS INFRASTRUCTURE WORKS

TALLAGHT/CLONDALKIN TO CITY CENTRE CORE BUS CORRIDOR SCHEME

BUS INTERCHANGE

DRAWING SERIES NUMBER(S)

- BCIDA-ACM-BLD_IX-0809_XX_00-DR-AA-0001
- BCIDA-ACM-BLD_AR-0809_IN_00-DR-AA-0001
- BCIDA-ACM-BLD_AR-0809_IN_00-DR-AA-0002
- BCIDA-ACM-BLD_AR-0809_IN_00-DR-AA-0003
- BCIDA-ACM-BLD_AR-0809_IN_00-DR-AA-0004
- BCIDA-ACM-BLD_AR-0809_IN_00-DR-AA-0005
- BCIDA-ACM-BLD_AR-0809_IN_00-DR-AA-0006

DRAWING SERIES DESCRIPTION

- TALLAGHT/CLONDALKIN TO CITY CENTRE SCHEME. BUS INTERCHANGE TALLAGHT. COVER SHEET
- TALLAGHT/CLONDALKIN TO CITY CENTRE SCHEME. BUS INTERCHANGE TALLAGHT. PROPOSED SITE PLAN
- TALLAGHT/CLONDALKIN TO CITY CENTRE SCHEME. BUS INTERCHANGE TALLAGHT. PROPOSED GROUND PLAN AND ROOF PLAN
- TALLAGHT/CLONDALKIN TO CITY CENTRE SCHEME. BUS INTERCHANGE TALLAGHT. PROPOSED LAYOUT SECTIONS
- TALLAGHT/CLONDALKIN TO CITY CENTRE SCHEME. BUS INTERCHANGE TALLAGHT. PROPOSED DETAIL ELEVATIONS
- TALLAGHT/CLONDALKIN TO CITY CENTRE SCHEME. BUS INTERCHANGE TALLAGHT. ARCHITECTURAL IMAGES
- TALLAGHT/CLONDALKIN TO CITY CENTRE SCHEME. BUS INTERCHANGE TALLAGHT. PROPOSED UTILITIES PLAN

C:\Users\andrew.bingham\OneDrive - AECOM\Documents\Tallaght Planning Phase\Bus Interchange\BCIDA-ACM-BLD_IX-0809_XX_00-DR-AA-0001.dwg

<p>Disclaimer</p> <p>a. © National Transport Authority (NTA) 2023. This drawing is confidential and the copyright in it is owned by NTA. This drawing must not be either loaned, copied or otherwise reproduced in whole or in part or used for any purpose without the prior permission of NTA.</p> <p>b. This drawing is to be used for the design element identified in the title block. Other information shown is to be considered indicative only. The drawing is to be read in conjunction with all other relevant design drawings.</p> <p>c. O.S. data used for plans are printed under © Ordnance Survey Ireland Government of Ireland. All rights reserved. Licence Number 2023/OS_NMA_180 National Transport Authority. All elevations are in metres and relate to OSi Geoid Model (OSGM15) Mean Head. All Co-ordinates are in Irish Transverse Mercator Grid (ITM) as defined by OSI active local GPS station.</p> <p>d. Information concerning the position of apparatus shown on this drawing is based on drawings supplied by the utility owners and/or the utility works contractor, whilst every care has been taken in the preparation of this drawing, positions should be taken as approximate and are intended for general guidance only and no representation is made by the NTA as to the accuracy, completeness, sufficiency or otherwise of this drawing and the position of the apparatus. The information contained herein does not purport to be comprehensive or final as the apparatus is subject to being altered and/or superceded. Recipients should not rely on this information. Any liabilities are hereby expressly disclaimed.</p> <p>e. The information contained herein has been provided by the NTA but does not purport to be comprehensive or final. Recipients should not rely on the information. Neither the NTA nor any of its directors, officers, employees, agents, stakeholders or advisers make any representation or warranty as to, or accept any liability or responsibility in relation to, the adequacy, accuracy, reasonableness or completeness of the information provided as part of this document or any matter on which the information is based (including but not limited to loss or damage arising as a result of reliance by recipients on the information or any part of it). Any liabilities are hereby expressly disclaimed.</p>	
---	--














Rev	Date	Drn	Chk'd	App'd	Description
M01	23/03/23	EM	AD	CA	ISSUE FOR STAGE 4: PLANNING

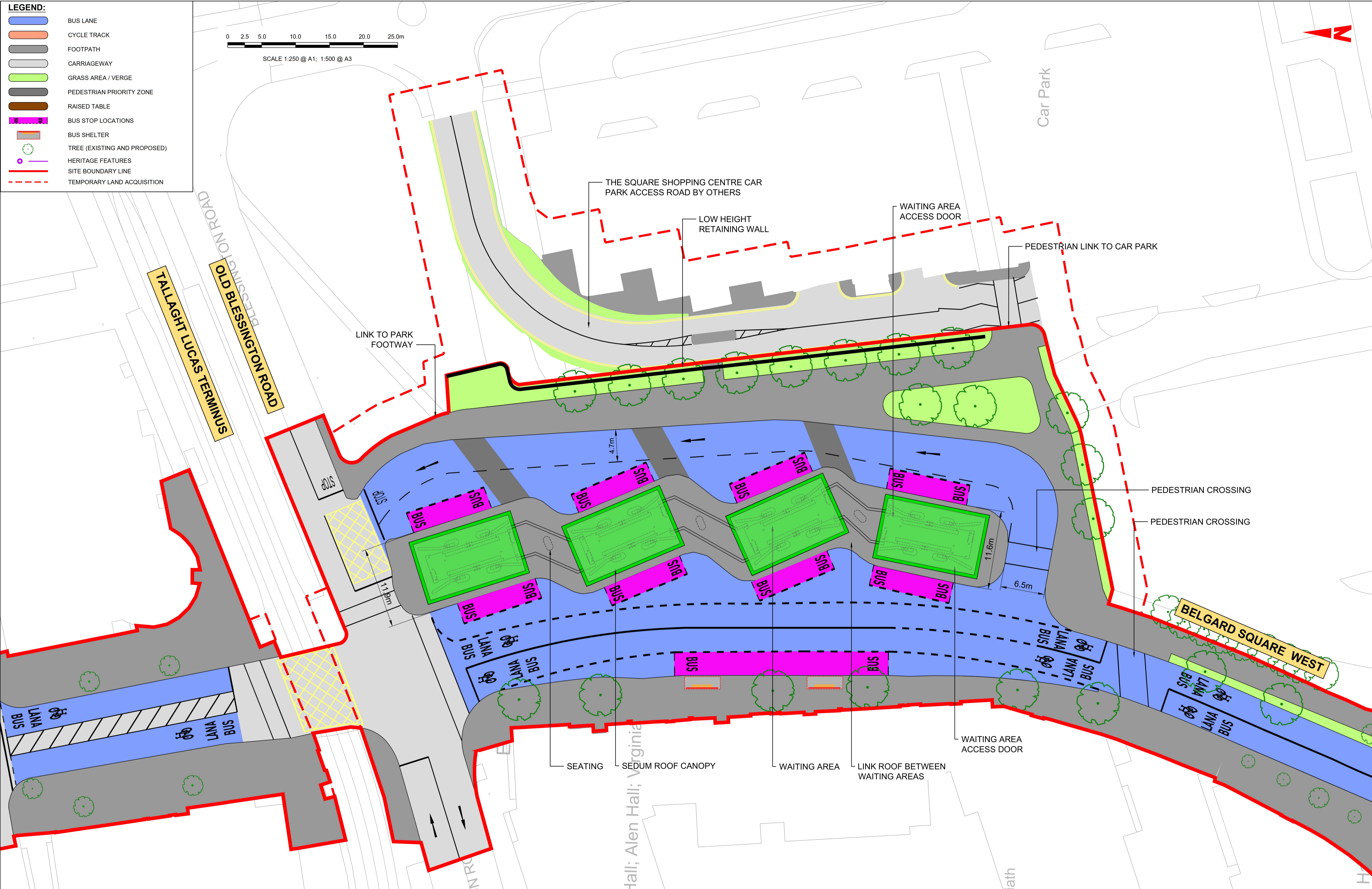
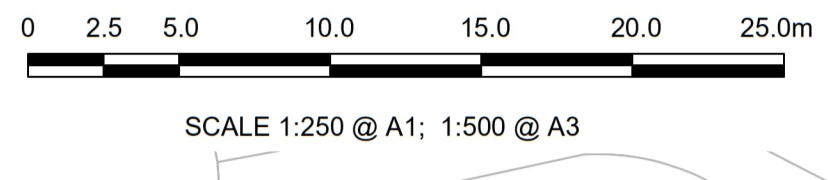
<p>Client</p>	<p>Engineering Designer</p>
<p>Date</p> <p>23/03/23</p>	<p>Scale</p> <p>N/A @ A1 N/A @ A3</p>
<p>Project Code</p> <p>BCIDA</p>	<p>Originator Code</p> <p>ACM</p>
<p>Drawn</p> <p>E.MINCHER</p>	<p>Checked</p> <p>A.DUGGAN</p>
<p>Approved</p> <p>C.ACTON</p>	<p>QMS Code</p>

<p>Programme Title</p> <p>BUSCONNECTS DUBLIN CORE BUS CORRIDORS INFRASTRUCTURE WORKS</p>			
<p>Drawing Title</p> <p>TALLAGHT/CLONDALKIN TO CITY CENTRE SCHEME BUS INTERCHANGE COVER SHEET</p>			
<p>Drawing File Name</p> <p>BCIDA-ACM-BLD_IX-0809_XX_00-DR-AA-0001</p>	<p>Sheet Number</p> <p>01 of 01</p>	<p>Status</p> <p>A</p>	<p>Rev</p> <p>M01</p>

DO NOT SCALE USE FIGURED DIMENSIONS ONLY

LEGEND:

-  BUS LANE
-  CYCLE TRACK
-  FOOTPATH
-  CARRIAGEWAY
-  GRASS AREA / VERGE
-  PEDESTRIAN PRIORITY ZONE
-  RAISED TABLE
-  BUS STOP LOCATIONS
-  BUS SHELTER
-  TREE (EXISTING AND PROPOSED)
-  HERITAGE FEATURES
-  SITE BOUNDARY LINE
-  TEMPORARY LAND ACQUISITION



Disclaimer

a. © National Transport Authority (NTA) 2023. This drawing is confidential and the copyright in it is owned by NTA. This drawing must not be either loaned, copied or otherwise reproduced in whole or in part or used for any purpose without the prior permission of NTA.

b. This drawing is to be used for the design element identified in the titleblock. Other information shown is to be considered indicative only. The drawing is to be read in conjunction with all other relevant design drawings.

c. O.S. data used for plans are printed under © Ordnance Survey Ireland Government of Ireland. All rights reserved. Licence Number 2023/OSI_NMA_180 National Transport Authority. All elevations are in metres and relate to OSI Geoid Model (OSGM15) Malin Head. All Co-ordinates are in Irish Transverse Mercator Grid (ITM) as defined by OSI active local GPS station.

d. Information concerning the position of apparatus shown on this drawing is based on drawings supplied by the utility owners and/or the utility works contractor, whilst every care has been taken in the preparation of this drawing, positions should be taken as approximate and are intended for general guidance only and no representation is made by the NTA as to the accuracy, completeness, sufficiency or otherwise of the information contained herein does not purport to be comprehensive or final as the apparatus is subject to being altered and/or superceded. Recipients should not rely on this information. Any liabilities are hereby expressly disclaimed.

e. The information contained herein has been provided by the NTA but does not purport to be comprehensive or final. Recipients should not rely on the information. Neither the NTA nor any of its directors, officers, employees, agents, stakeholders or advisers make any representation or warranty as to, or accept any liability or responsibility in relation to, the adequacy, accuracy, reasonableness or completeness of the information provided as part of this document or any matter on which the information is based (including but not limited to loss or damage arising as a result of reliance by recipients on the information or any part of it). Any liabilities are hereby expressly disclaimed.

Project Ireland 2040
Building Ireland's Future

Rev	Date	Drn	Chk'd	App'd	Description
M01	23/03/23	EM	AD	CA	ISSUE FOR STAGE 4: PLANNING

Client: **NTA**
Údarás Náisiúnta Iompair
National Transport Authority

Engineering Designer: **AECOM** MOTT MACDONALD

Date: 23/03/23
Scale: 1:250 @ A1, 1:500 @ A3

Project Code: BCIDA
Originator Code: ACM

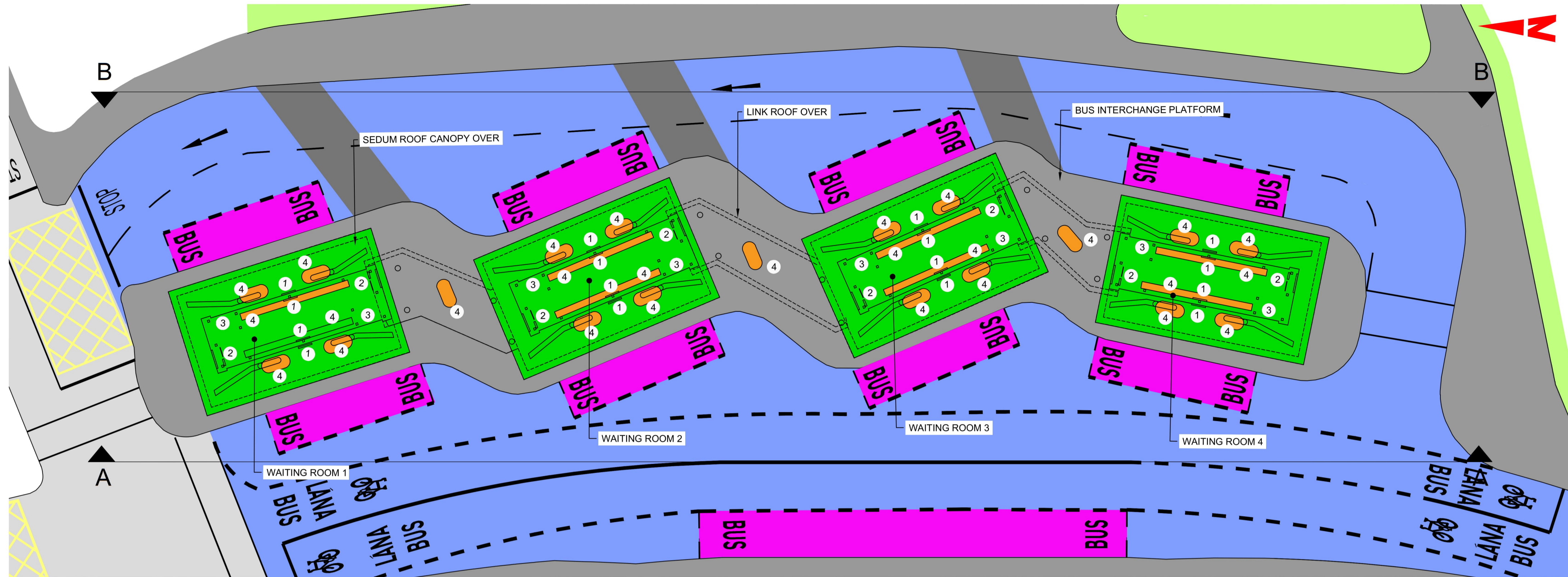
Drawn: E.MINCHER
Checked: A.DUGGAN
QMS Code

Approved: C.ACTON

Programme Title: BUSCONNECTS DUBLIN CORE BUS CORRIDORS INFRASTRUCTURE WORKS			
Drawing Title: TALLAGHT/CLONDALKIN TO CITY CENTRE CORE BUS CORRIDOR SCHEME BUS INTERCHANGE TALLAGHT PROPOSED SITE PLAN			
Drawing File Name: BCIDA-ACM-BLD_AR-0809_IN_00-DR-AA-0001	Sheet Number: 01 of 01	Status: A	Rev: M01

DO NOT SCALE USE FIGURED DIMENSIONS ONLY

C:\Users\andrew.bingham\OneDrive - AECOM\Directory\Bus Connects\Tallaght Planning Phase\Bus Interchange\BCIDA-ACM-BLD_AR-0809_IN_00-DR-AA-0001.dwg

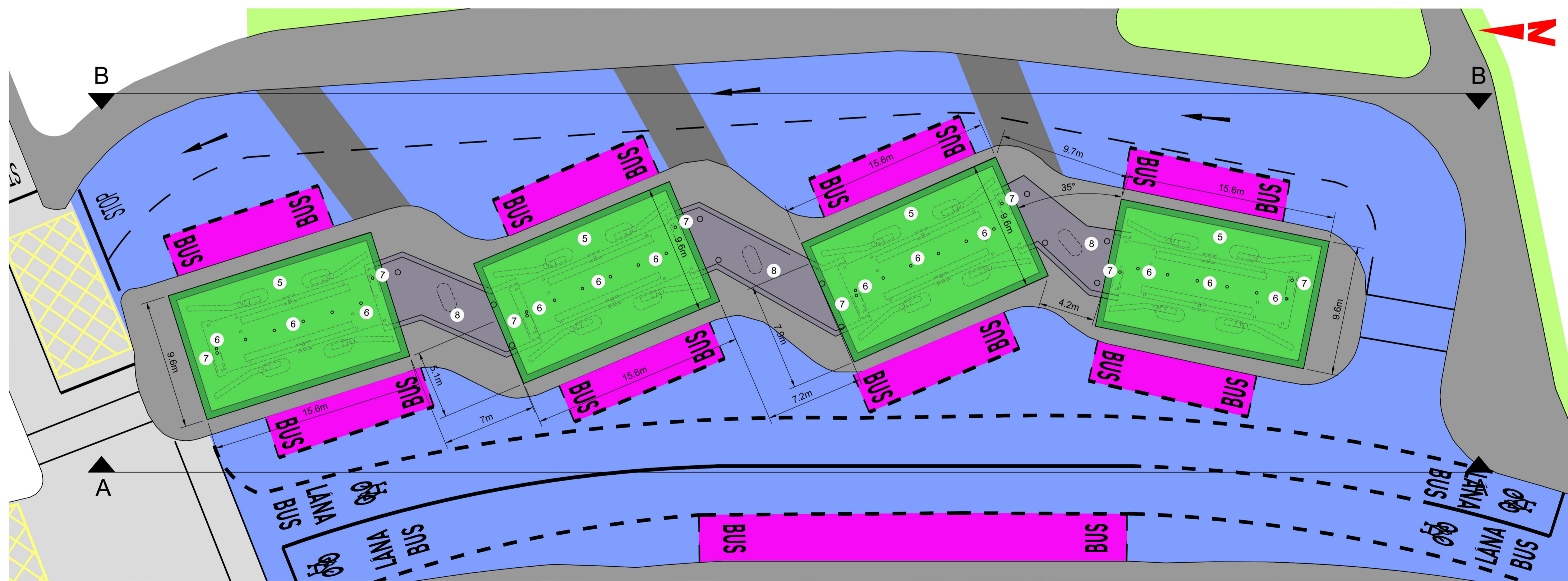


01 PROPOSED GROUND FLOOR PLAN
0002 1:200

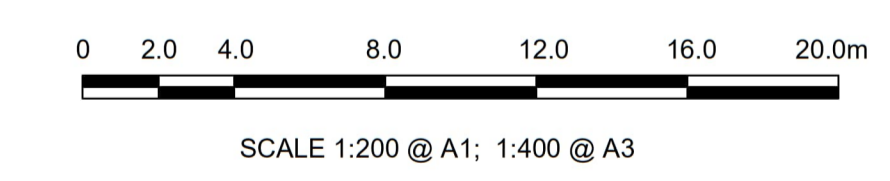
LEGEND:

- BUS LANE
- CYCLE TRACK
- FOOTPATH
- CARRIAGEWAY
- GRASS AREA / VERGE
- PEDESTRIAN PRIORITY ZONE
- RAISED TABLE
- BUS STOP LOCATIONS
- BUS SHELTER
- TREE (EXISTING AND PROPOSED)
- HERITAGE FEATURES
- SITE BOUNDARY LINE
- TEMPORARY LAND ACQUISITION

- NUMBERED LEGEND:**
- 1 - PROPOSED RTPI
 - 2 - TOUCH SCREEN AND TIMETABLE DISPLAY
 - 3 - WAITING ROOM ACCESS
 - 4 - SEATING
 - 5 - SEDUM OR EQUIVALENT GREEN ROOF
 - 6 - FALL ARREST SYSTEM
 - 7 - CONCEALED RAIN WATER OUTLET
 - 8 - LINK CANOPY



02 PROPOSED ROOF PLAN
0002 1:200



C:\Users\andrew.bingham\OneDrive - AECOM\Documents\Tallaigh Planning\PhaseBus Interchange\BCIDA-ACM-BLD_AR-0809_IN_00-DR-AA-0002.dwg

Disclaimer

a. © National Transport Authority (NTA) 2023. This drawing is confidential and the copyright in it is owned by NTA. This drawing must not be either loaned, copied or otherwise reproduced in whole or in part or used for any purpose without the prior permission of NTA.

b. This drawing is to be used for the design element identified in the titleblock. Other information shown is to be considered indicative only. The drawing is to be read in conjunction with all other relevant design drawings.

c. O.S. data used for plans are printed under © Ordnance Survey Ireland Government of Ireland. All rights reserved. Licence Number 2023/OSI_NMA_180 National Transport Authority. All elevations are in metres and relate to OSI Geoid Model (OSGM15) Malin Head. All Co-ordinates are in Irish Transverse Mercator Grid (ITM) as defined by OSI active local GPS station.

d. Information concerning the position of apparatus shown on this drawing is based on drawings supplied by the utility owners and/or the utility works contractor, whilst every care has been taken in the preparation of this drawing, positions should be taken as approximate and are intended for general guidance only and no representation is made by the NTA as to the accuracy, completeness, sufficiency or otherwise of this drawing and the position of the apparatus. The information contained herein does not purport to be comprehensive or final as the apparatus is subject to being altered and/or superceded. Recipients should not rely on this information. Any liabilities are hereby expressly disclaimed.

e. The information contained herein has been provided by the NTA but does not purport to be comprehensive or final. Recipients should not rely on the information. Neither the NTA nor any of its directors, officers, employees, agents, stakeholders or advisers make any representation or warranty as to, or accept any liability or responsibility in relation to, the adequacy, accuracy, reasonableness or completeness of the information provided as part of this document or any matter on which the information is based (including but not limited to loss or damage arising as a result of reliance by recipients on the information or any part of it). Any liabilities are hereby expressly disclaimed.

Rev	Date	Drn	Chk'd	App'd	Description
M01	23/03/23	EM	AD	CA	ISSUE FOR STAGE 4: PLANNING

Client: **NTA**
Údarás Náisiúnta Iompair
National Transport Authority

Engineering Designer: **AECOM** M MOTT MACDONALD

Date: 23/03/23
Scale: 1:200 @ A1, 1:400 @ A3

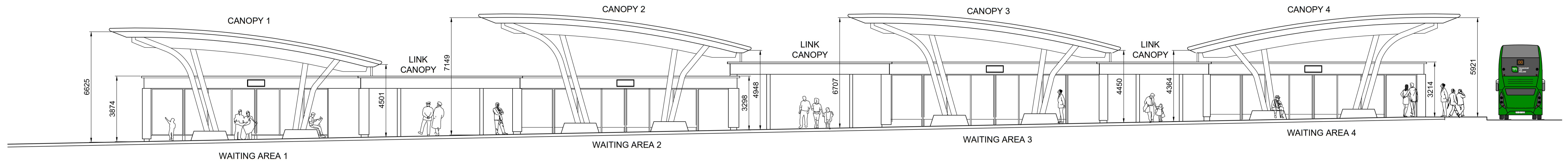
Project Code: BCIDA
Originator Code: ACM

Drawn: E.MINCHER
Checked: A.DUGGAN
Approved: C.ACTON

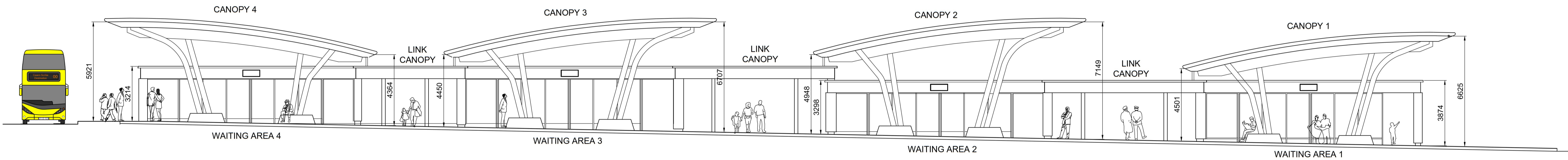
QMS Code:

Programme Title BUSCONNECTS DUBLIN CORE BUS CORRIDORS INFRASTRUCTURE WORKS			
Drawing Title TALLAGHT/CLONDALKIN TO CITY CENTRE CORE BUS CORRIDOR SCHEME BUS INTERCHANGE TALLAGHT PROPOSED GROUND PLAN AND ROOF PLAN			
Drawing File Name BCIDA-ACM-BLD_AR-0809_IN_00-DR-AA-0002	Sheet Number 01 of 01	Status A	Rev M01

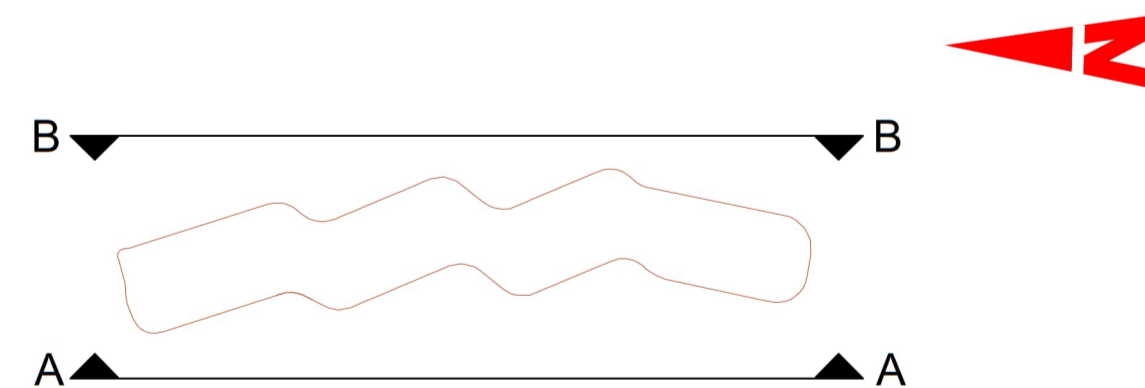
DO NOT SCALE USE FIGURED DIMENSIONS ONLY



01 ELEVATION A
0003 NTS



02 ELEVATION B
0003 NTS



03 KEY PLAN
0003 NTS

Disclaimer
 a. © National Transport Authority (NTA) 2023. This drawing is confidential and the copyright in it is owned by NTA. This drawing must not be either loaned, copied or otherwise reproduced in whole or in part or used for any purpose without the prior permission of NTA.
 b. This drawing is to be used for the design element identified in the titleblock. Other information shown is to be considered indicative only. The drawing is to be read in conjunction with all other relevant design drawings.
 c. O.S. data used for plans are printed under © Ordnance Survey Ireland Government of Ireland. All rights reserved. Licence Number 2023/OSI_NMA_180 National Transport Authority. All elevations are in metres and relate to OSI Geoid Model (OSGM15) Malin Head. All Co-ordinates are in Irish Transverse Mercator Grid (ITM) as defined by OSI active local GPS station.
 d. Information concerning the position of apparatus shown on this drawing is based on drawings supplied by the utility owners and/or the utility works contractor, whilst every care has been taken in the preparation of this drawing, positions should be taken as approximate and are intended for general guidance only and no representation is made by the NTA as to the accuracy, completeness, sufficiency or otherwise of this drawing and the position of the apparatus. The information contained herein does not purport to be comprehensive or final as the apparatus is subject to being altered and/or superceded. Recipients should not rely on this information. Any liabilities are hereby expressly disclaimed.
 e. The information contained herein has been provided by the NTA but does not purport to be comprehensive or final. Recipients should not rely on the information. Neither the NTA nor any of its directors, officers, employees, agents, stakeholders or advisers make any representation or warranty as to, or accept any liability or responsibility in relation to, the adequacy, accuracy, reasonableness or completeness of the information provided as part of this document or any matter on which the information is based (including but not limited to loss or damage arising as a result of reliance by recipients on the information or any part of it). Any liabilities are hereby expressly disclaimed.



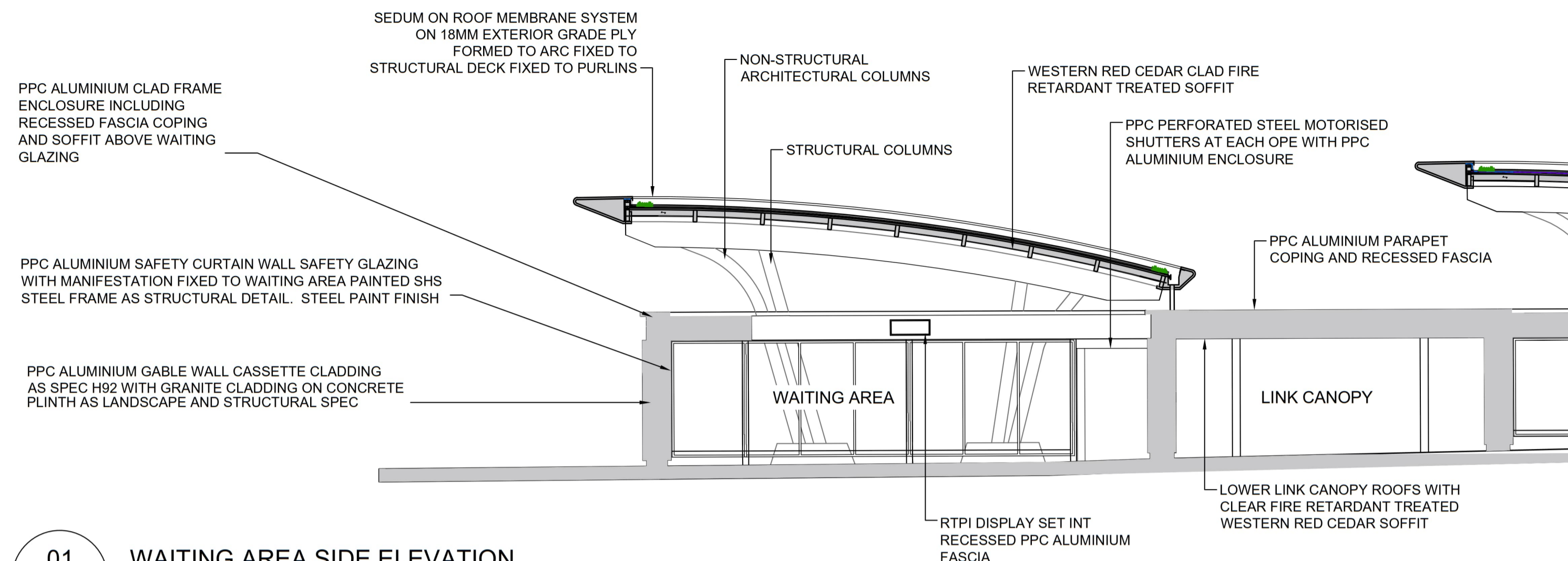
Rev	Date	Drn	Chk'd	App'd	Description
M01	23/03/23	EM	AD	CA	ISSUE FOR STAGE 4: PLANNING

Client NTA Údarás Náisiúnta Iompair National Transport Authority		Engineering Designer AECOM M MOTT MACDONALD	
Date 23/03/23	Scale NTS @ A1 NTS @ A3	Drawn E.MINCHER	Checked A.DUGGAN
Project Code BCIDA	Originator Code ACM	Approved C.ACTON	
QMS Code		QMS Code	

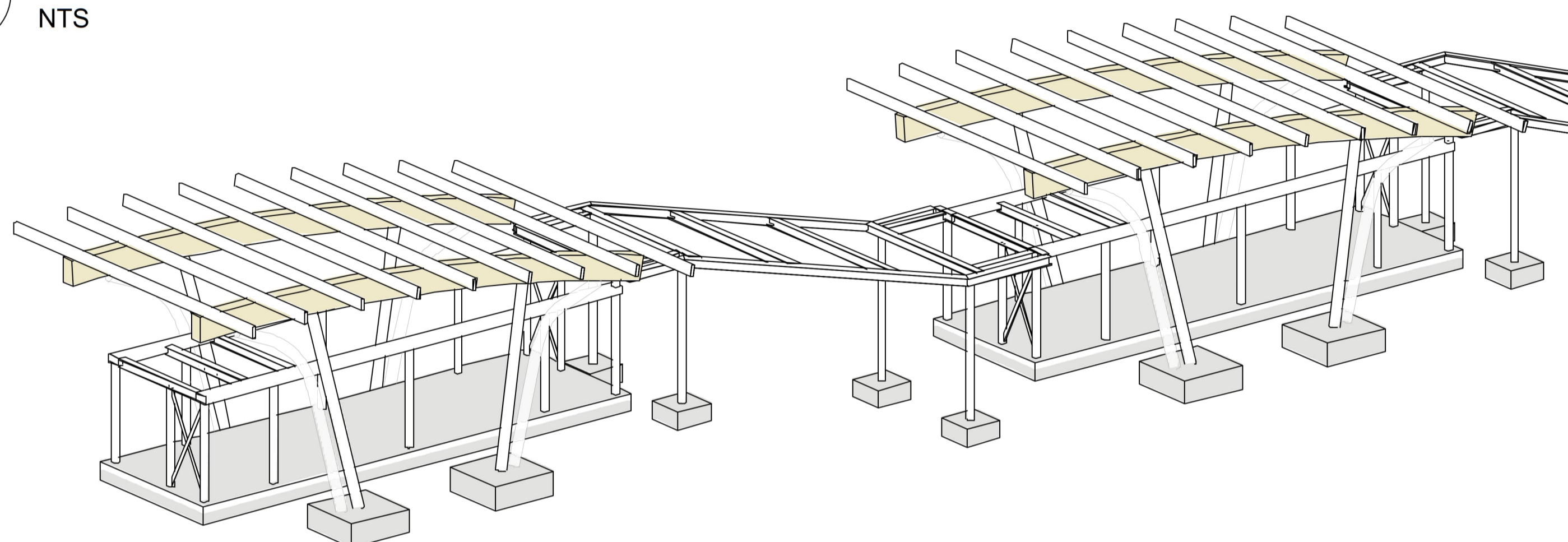
Programme Title BUSCONNECTS DUBLIN CORE BUS CORRIDORS INFRASTRUCTURE WORKS			
Drawing Title TALLAGHT/CLONDALKIN TO CITY CENTRE CORE BUS CORRIDOR SCHEME BUS INTERCHANGE TALLAGHT PROPOSED LAYOUT SECTIONS			
Drawing File Name BCIDA-ACM-BLD_AR-0809_IN_00-DR-AA-0003	Sheet Number 01 of 01	Status A	Rev M01

DO NOT SCALE USE FIGURED DIMENSIONS ONLY

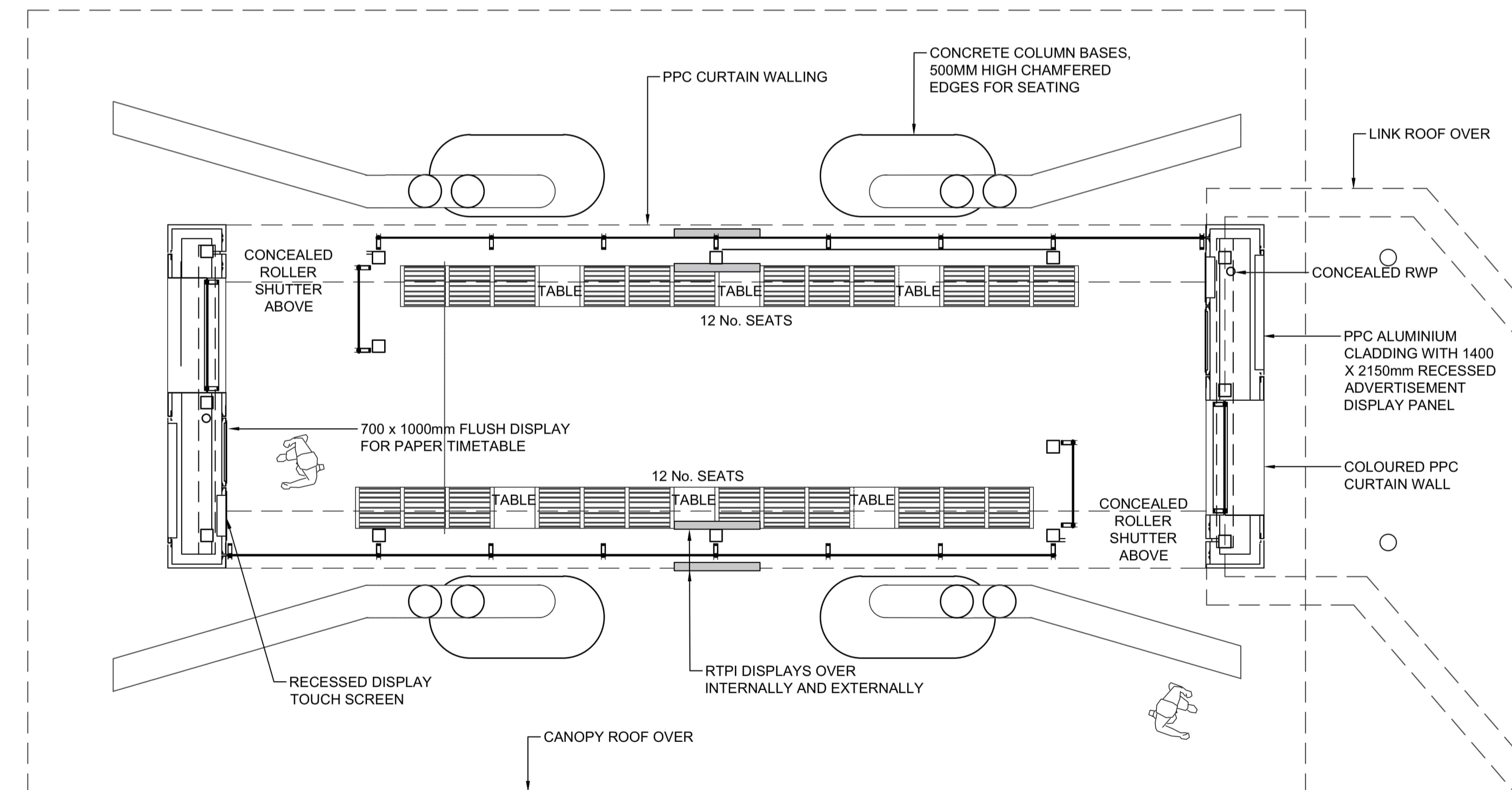
C:\Users\andrew.bingham\OneDrive - AECOM\Directory\Bus Connects\Tallaght Planning Phase\Bus Interchange\BCIDA-ACM-BLD_AR-0809_IN_00-DR-AA-0003.dwg



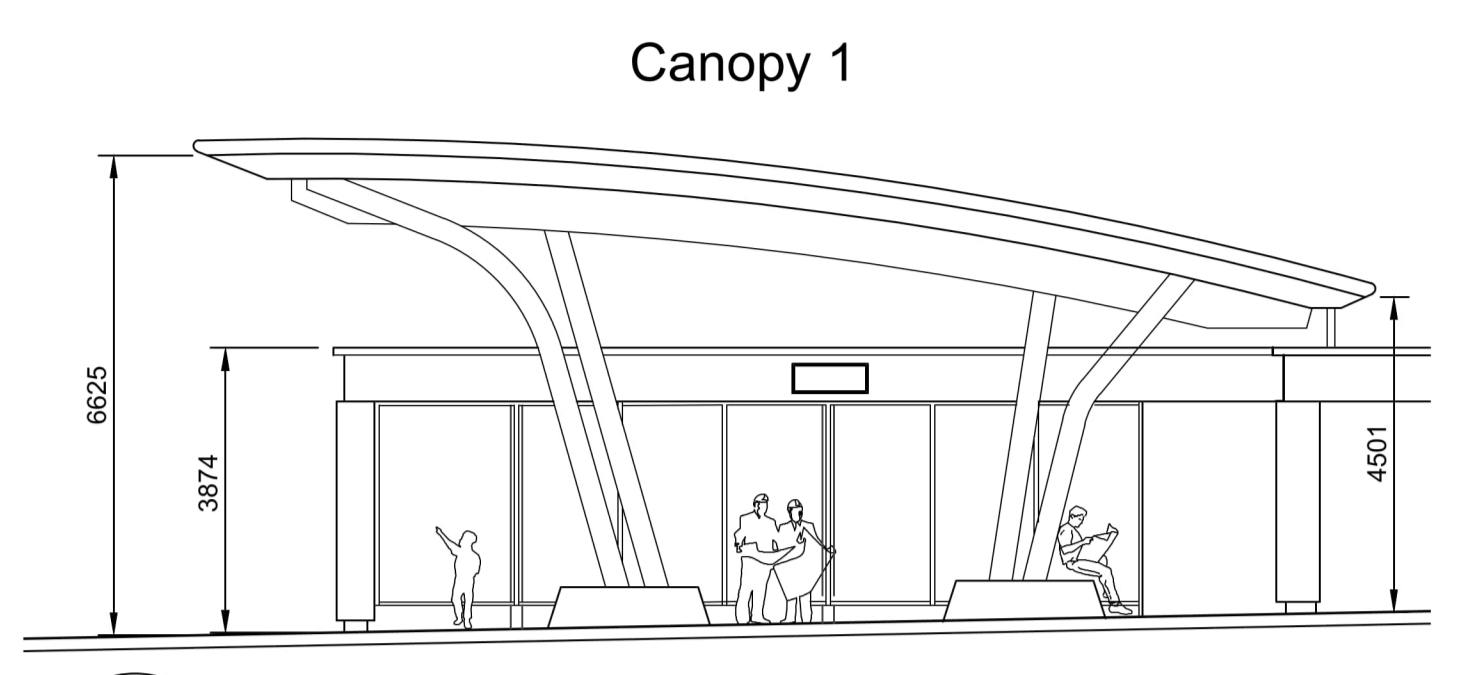
01 WAITING AREA SIDE ELEVATION
0004 NTS



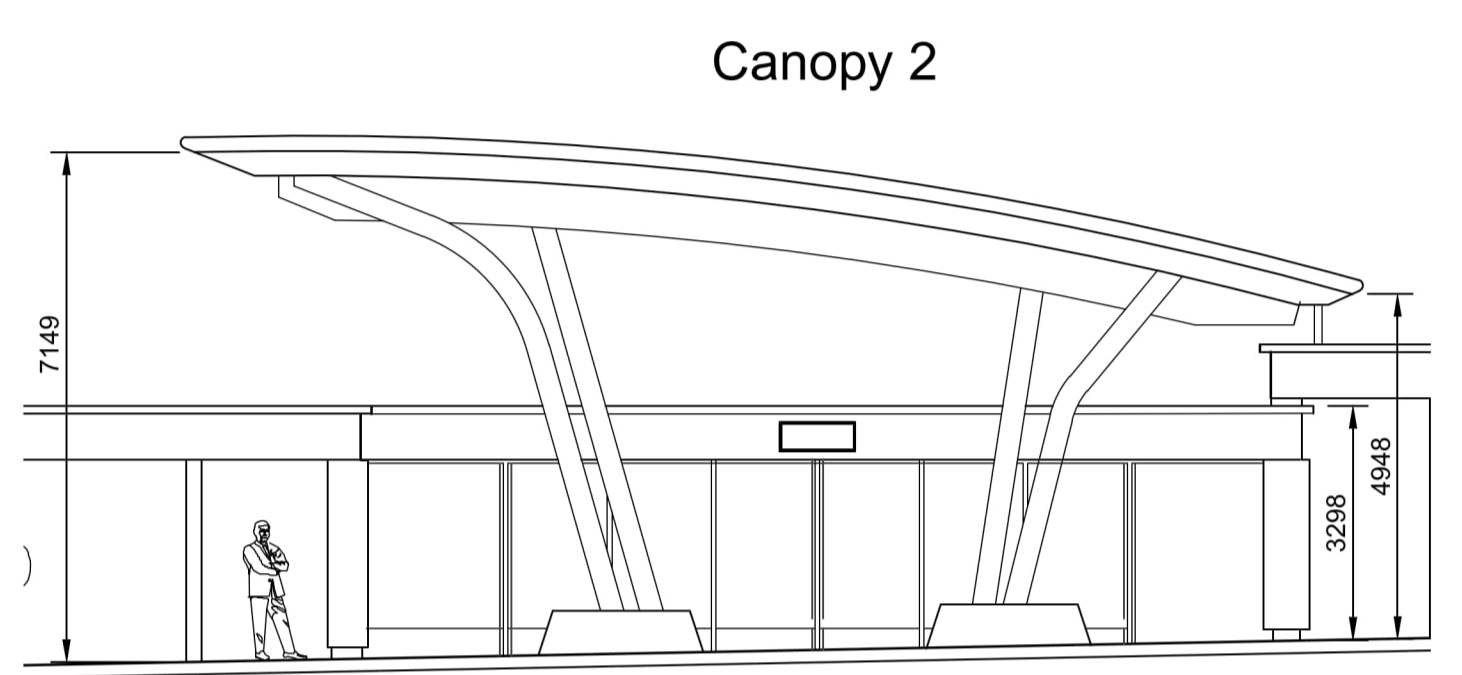
02 TYPICAL STRUCTURE 3D VIEW
0004 NTS



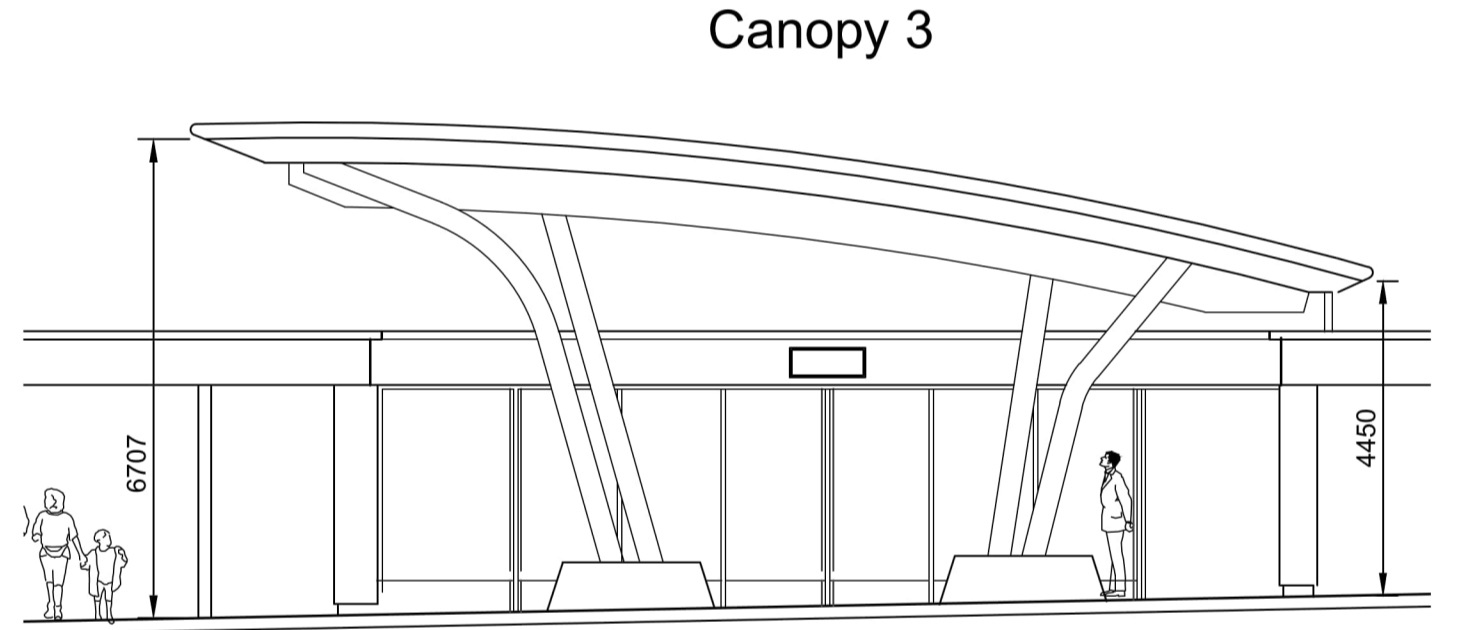
03 WAITING AREA PLAN VIEW
0004 Scale 1:50



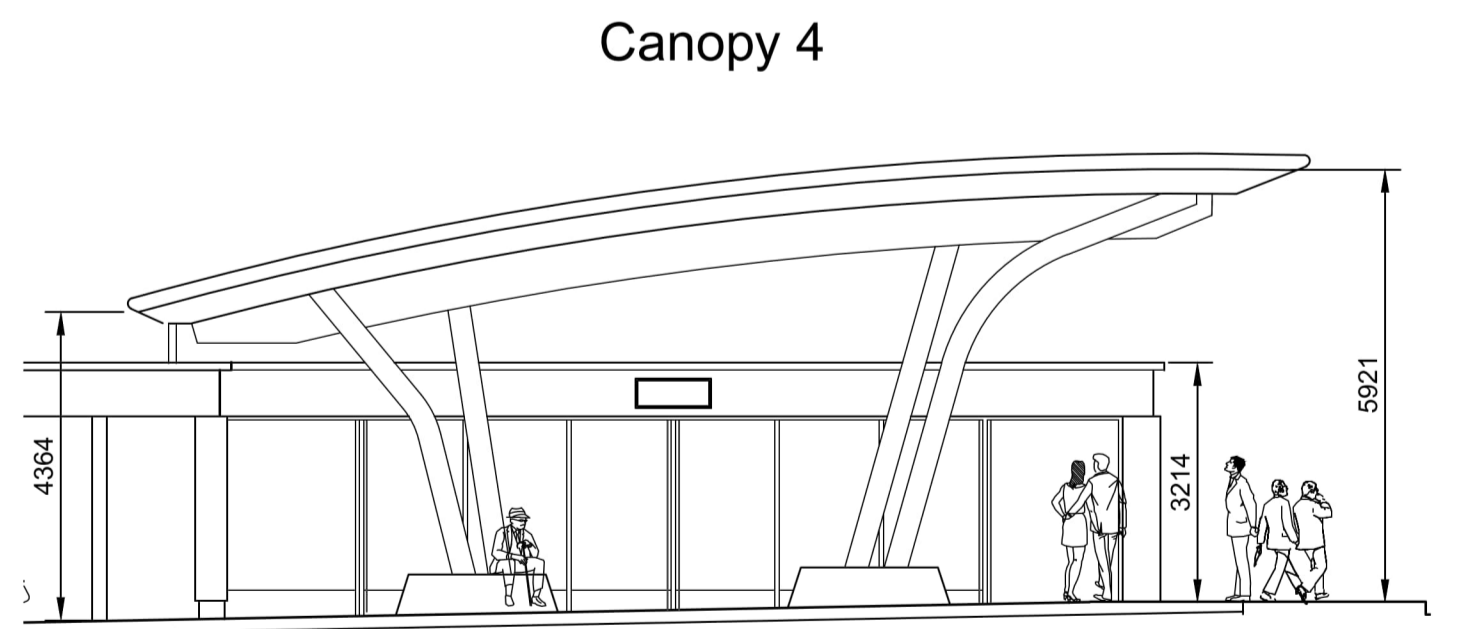
04 WAITING AREA 1
0004 NTS



05 WAITING AREA 2
0004 NTS



06 WAITING AREA 3
0004 NTS



07 WAITING AREA 4
0004 NTS

C:\Users\andrew.bingham\OneDrive - AECOM Directory\Bus Connects\Tallaght Planning Phase\Bus Interchange\BCIDA-ACM-BLD_AR-0809_IN_00-DR-AA-0004.dwg

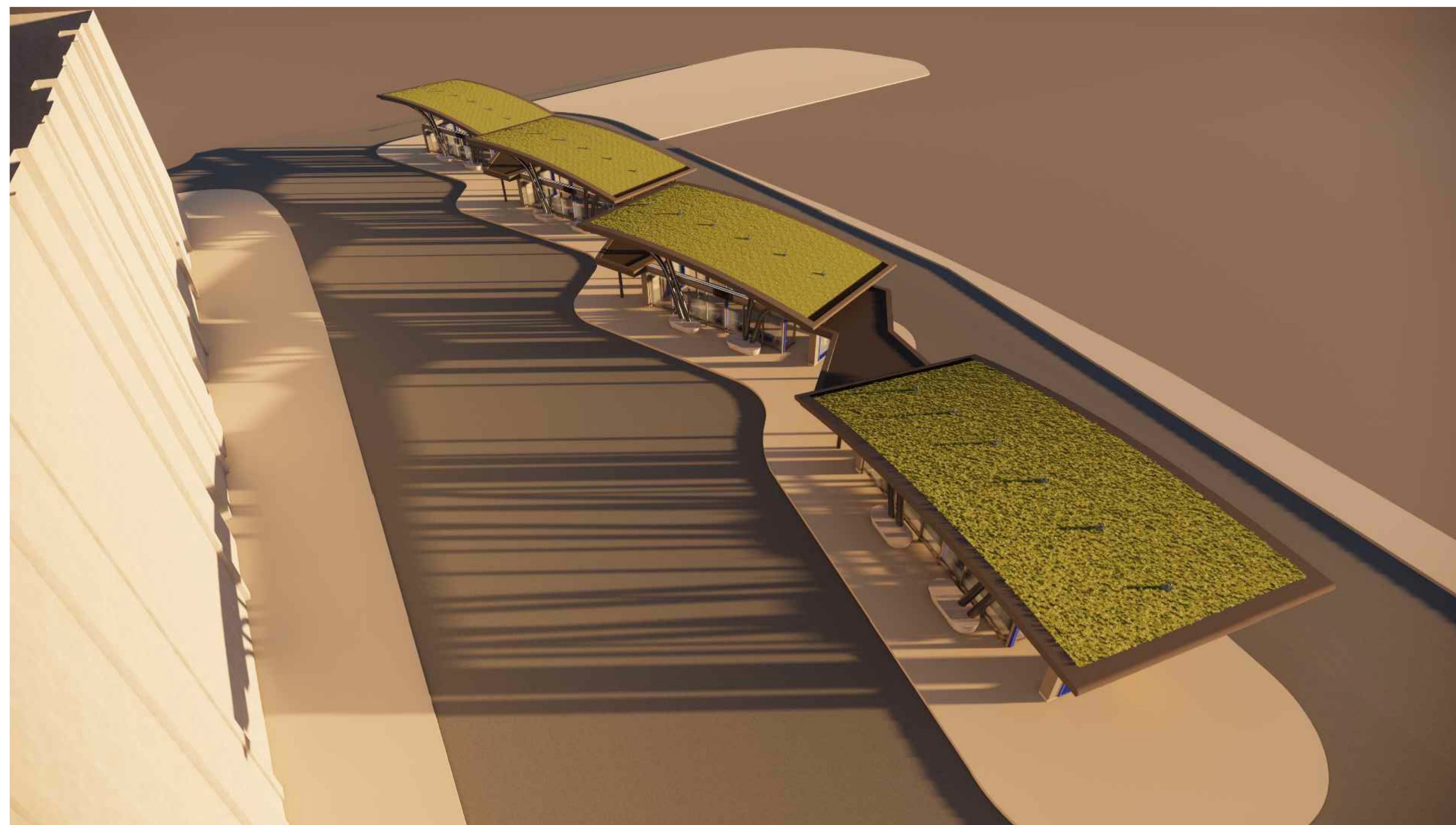
Disclaimer
 a. © National Transport Authority (NTA) 2023. This drawing is confidential and the copyright in it is owned by NTA. This drawing must not be either loaned, copied or otherwise reproduced in whole or in part or used for any purpose without the prior permission of NTA.
 b. This drawing is to be used for the design element identified in the titlebox. Other information shown is to be considered indicative only. The drawing is to be read in conjunction with all other relevant design drawings.
 c. O.S. data used for plans are printed under © Ordnance Survey Ireland Government of Ireland. All rights reserved. Licence Number 2023/OS_NMA_180 National Transport Authority. All elevations are in metres and relate to OSI Geoid Model (OSGM15) Mean Head. All Co-ordinates are in Irish Transverse Mercator Grid (ITM) as defined by OSI active local GPS station.
 d. Information concerning the position of apparatus shown on this drawing is based on drawings supplied by the utility owners and/or the utility works contractor, whilst every care has been taken in the preparation of this drawing, positions should be taken as approximate and are intended for general guidance only and no representation is made by the NTA as to the accuracy, completeness, sufficiency or otherwise of this drawing and the position of the apparatus. The information contained herein does not purport to be comprehensive or final as the apparatus is subject to being altered and/or superceded. Recipients should not rely on this information. Any liabilities are hereby expressly disclaimed.
 e. The information contained herein has been provided by the NTA but does not purport to be comprehensive or final. Recipients should not rely on the information. Neither the NTA nor any of its directors, officers, employees, agents, stakeholders or advisers make any representation or warranty as to, or accept any liability or responsibility in relation to, the adequacy, accuracy, reasonableness or completeness of the information provided as part of this document or any matter on which the information is based (including but not limited to loss or damage arising as a result of reliance by recipients on the information or any part of it). Any liabilities are hereby expressly disclaimed.

Rev	Date	Drn	Chk'd	App'd	Description
M01	23/03/23	EM	AD	CA	ISSUE FOR STAGE 4: PLANNING

Date	Scale	Drawn	Checked	Approved	
23/03/23	NTS @ A1 NTS @ A3	E. MINCHER	A. DUGGAN	C. ACTON	
Project Code	Originator Code	QMS Code			
BCIDA	ACM				

Programme Title BUSCONNECTS DUBLIN CORE BUS CORRIDORS INFRASTRUCTURE WORKS			
Drawing Title TALLAGHT/CLONDALKIN TO CITY CENTRE CORE BUS CORRIDOR SCHEME BUS INTERCHANGE TALLAGHT PROPOSED DETAIL ELEVATIONS			
Drawing File Name	Sheet Number	Status	Rev
BCIDA-ACM-BLD_AR-0809_IN_00-DR-AA-0004	01 of 01	A	M01

DO NOT SCALE USE FIGURED DIMENSIONS ONLY



01 VIEW 1
0005

02 VIEW 2
0005






03 VIEW 3
0005

04 VIEW 4
0005

C:\Users\andrew.bingham\OneDrive - AECOM\Documents\Tallaght Planning Phase\Bus Interchange\BCIDA-ACM-BLD_AR-0809_IN_00-DR-AA-0005.dwg

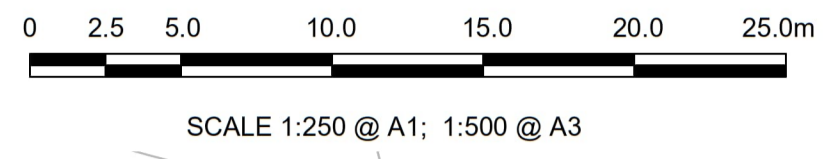
Disclaimer
 a. © National Transport Authority (NTA) 2023. This drawing is confidential and the copyright in it is owned by NTA. This drawing must not be either loaned, copied or otherwise reproduced in whole or in part or used for any purpose without the prior permission of NTA.
 b. This drawing is to be used for the design element identified in the titleblock. Other information shown is to be considered indicative only. The drawing is to be read in conjunction with all other relevant design drawings.
 c. O.S. data used for plans are printed under © Ordnance Survey Ireland Government of Ireland. All rights reserved. Licence Number 2023/OSI_NMA_180 National Transport Authority. All elevations are in metres and relate to OSI Geoid Model (OSGM15) Malin Head. All Co-ordinates are in Irish Transverse Mercator Grid (ITM) as defined by OSI active local GPS station.
 d. Information concerning the position of apparatus shown on this drawing is based on drawings supplied by the utility owners and/or the utility works contractor, whilst every care has been taken in the preparation of this drawing, positions should be taken as approximate and are intended for general guidance only and no representation is made by the NTA as to the accuracy, completeness, sufficiency or otherwise of this drawing and the position of the apparatus. The information contained herein does not purport to be comprehensive or final as the apparatus is subject to being altered and/or superceded. Recipients should not rely on this information. Any liabilities are hereby expressly disclaimed.
 e. The information contained herein has been provided by the NTA but does not purport to be comprehensive or final. Recipients should not rely on the information. Neither the NTA nor any of its directors, officers, employees, agents, stakeholders or advisers make any representation or warranty as to, or accept any liability or responsibility in relation to, the adequacy, accuracy, reasonableness or completeness of the information provided as part of this document or any matter on which the information is based (including but not limited to loss or damage arising as a result of reliance by recipients on the information or any part of it). Any liabilities are hereby expressly disclaimed.

Rev	Date	Drn	Chk'd	App'd	Description
M01	23/03/23	EM	AD	CA	ISSUE FOR STAGE 4: PLANNING

 Údarás Náisiúnta Iompair National Transport Authority		Engineering Designer  		
Date 23/03/23	Scale N/A @ A1 N/A @ A3	Drawn E.MINCHER	Checked A.DUGGAN	Approved C.ACTON
Project Code BCIDA	Originator Code ACM	QMS Code		

Programme Title BUSCONNECTS DUBLIN CORE BUS CORRIDORS INFRASTRUCTURE WORKS			
Drawing Title TALLAGHT/CLONDALKIN TO CITY CENTRE CORE BUS CORRIDOR SCHEME BUS INTERCHANGE TALLAGHT ARCHITECTUAL IMAGES			
Drawing File Name BCIDA-ACM-BLD_AR-0809_IN_00-DR-AA-0005	Sheet Number 01 of 01	Status A	Rev M01

DO NOT SCALE USE FIGURED DIMENSIONS ONLY



OLD BLESSINGTON ROAD

BLESSINGTON ROAD

A 150

Horan Hall; Alen Hall; Virginia

PROPOSED STORMWATER NETWORK
(REFER TO SCHEME PROPOSED SURFACE
WATER DRAINAGE DRAWINGS FOR DETAILS)

COMMS CONNECTION TO
EXISTING NETWORK (TBC)

EXISTING STORMWATER NETWORK

Baile

Átha Cliath

A 100

PROPOSED INTERCHANGE LIGHTING
POWER SUPPLY INDICATIVELY
SHOWN. TO BE MANAGED BY OTHERS

PROPOSED STREET LIGHTING

REALIGNED CAR PARK ACCESS ROAD (BY OTHERS)

PROPOSED RETAINING WALL LESS
THAN 1.5m RETAINED HEIGHT

PROPOSED STORMWATER NETWORK
(REFER TO SCHEME PROPOSED SURFACE
WATER DRAINAGE DRAWINGS FOR DETAILS)

PROPOSED POWER SUPPLY
ROUTING INDICATIVELY SHOWN

Car Park

EXISTING MINIPILLAR

UTILITIES LEGEND:

- LIGHTING COLUMN (PROPOSED)
- LIGHTING COLUMN (RETAINED)
- LIGHTING COLUMN (REMOVED)
- EXISTING STORM WATER DRAINAGE
- PROPOSED STORM WATER DRAINAGE
- PROPOSED 150mm Ø ELECTRICAL DUCT
- PROPOSED 100mmØ TELECOMS DUCT
- PROPOSED TELECOMS CHAMBER

LEGEND:

- BUS LANE
- CYCLE TRACK
- FOOTPATH
- CARRIAGEWAY
- GRASS AREA / VERGE
- PEDESTRIAN PRIORITY ZONE
- RAISED TABLE
- BUS STOP LOCATIONS
- BUS SHELTER
- TREE (EXISTING AND PROPOSED)
- HERITAGE FEATURES
- SITE BOUNDARY LINE
- TEMPORARY LAND ACQUISITION

Disclaimer
a. © National Transport Authority (NTA) 2023. This drawing is confidential and the copyright in it is owned by NTA. This drawing must not be either loaned, copied or otherwise reproduced in whole or in part or used for any purpose without the prior permission of NTA.
b. This drawing is to be used for the design element identified in the titlebox. Other information shown is to be considered indicative only. The drawing is to be read in conjunction with all other relevant design drawings.
c. O.S. data used for plans are printed under © Ordnance Survey Ireland Government of Ireland. All rights reserved. Licence Number 2023/OSI_NMA_180 National Transport Authority. All elevations are in metres and relate to OSI Geoid Model (OSGM15) Malin Head. All Co-ordinates are in Irish Transverse Mercator Grid (ITM) as defined by OSI active local GPS station.
d. Information concerning the position of apparatus shown on this drawing is based on drawings supplied by the utility owners and/or the utility works contractor, whilst every care has been taken in the preparation of this drawing, positions should be taken as approximate and are intended for general guidance only and no representation is made by the NTA as to the accuracy, completeness, sufficiency or otherwise of this drawing and the position of the apparatus. The information contained herein does not purport to be comprehensive or final as the apparatus is subject to being altered and/or superceded. Recipients should not rely on this information. Any liabilities are hereby expressly disclaimed.
e. The information contained herein has been provided by the NTA but does not purport to be comprehensive or final. Recipients should not rely on the information. Neither the NTA nor any of its directors, officers, employees, agents, stakeholders or advisers make any representation or warranty as to, or accept any liability or responsibility in relation to the adequacy, accuracy, reasonableness or completeness of the information provided as part of this document or any matter on which the information is based (including but not limited to loss or damage arising as a result of reliance by recipients on the information or any part of it). Any liabilities are hereby expressly disclaimed.



Rev	Date	Drn	Chk'd	App'd	Description
M01	23/03/23	EM	AD	CA	ISSUE FOR STAGE 4: PLANNING

Client
NTA
Údarás Náisiúnta Iompair
National Transport Authority

Date: 23/03/23
Scale: 1:250 @ A1, 1:500 @ A3

Project Code: BCIDA
Originator Code: ACM

Engineering Designer
AECOM **MOTT MACDONALD**

Drawn: E.MINCHER
Checked: A.DUGGAN
Approved: C.ACTON

QMS Code

Programme Title BUSCONNECTS DUBLIN CORE BUS CORRIDORS INFRASTRUCTURE WORKS			
Drawing Title TALLAGHT/CLONDALKIN TO CITY CENTRE CORE BUS CORRIDOR SCHEME BUS INTERCHANGE TALLAGHT PROPOSED UTILITIES PLAN			
Drawing File Name BCIDA-ACM-BLD_AR-0809_IN_00-DR-AA-0006	Sheet Number 01 of 01	Status A	Rev M01

DO NOT SCALE USE FIGURED DIMENSIONS ONLY

C:\Users\andrew.bingham\OneDrive - AECOM\Directory\Bus Connects\Tallaght Planning Phase\Bus Interchange\BCIDA-ACM-BLD_AR-0809_IN_00-DR-AA-0006.dwg